

# FFW

REFERENCE MARKS

STA	TO	ORIGIN	BEARING	DIST
1	OScrew in Sewer M/H	27/SP189839	105°31'	1.755
3	OScrew in Kb	15/SP189839	204°53'45"	5.172
4	Screw in Kb		199°21'50"	3.992
7	Screw in Kb		57°58'30"	6.286
9	Screw in Kb		283°55'20"	11.364
11	OScrew in Kb	17/SP189839	300°07'	0.803
12	OScrew in Kb	16/SP189839	185°53'	1.492
14	Screw in Kb		99°53'15"	10.642
18	Screw in Kb		188°22'05"	10.267
20	Screw in Kb		281°41'25"	11.425
21	Screw in Kb		311°04'50"	10.67
23	OScrew in Kb	32/SP189841	167°08'	5.4
24	Screw in Kb		255°11'05"	12.66
25	Screw in Kb		204°02'20"	5.66
28	Screw in Kb		140°39'20"	9.781
29	Screw in Kb		130°05'30"	5.658
31	Screw in M/H		100°21'	15.584
32	OScrew in Kb	20/SP189839	356°25'50"	2.591
36	OScrew in Kb	36/SP189841	276°22'10"	12.095
37	OScrew in Kb	22/SP189830	31°57'40"	7.445
41	OScrew in M/H	41/SP189841	346°55'	2.29
55	Screw in Kb		125°50'10"	5.3
72	Screw in Kb		310°58'30"	9.66
102	OIP	6/EP956	253°46'35"	7.846
			253°35'	1.016

PERMANENT MARKS

PM	ORIGIN	BEARING	DIST	NO
3a-PM		at Station		174970
17a-PM		at Station		174971
22a-OPM	33a/SP189841	at Station		167146
40a-OPM	15a/SP189830	at Station		167162

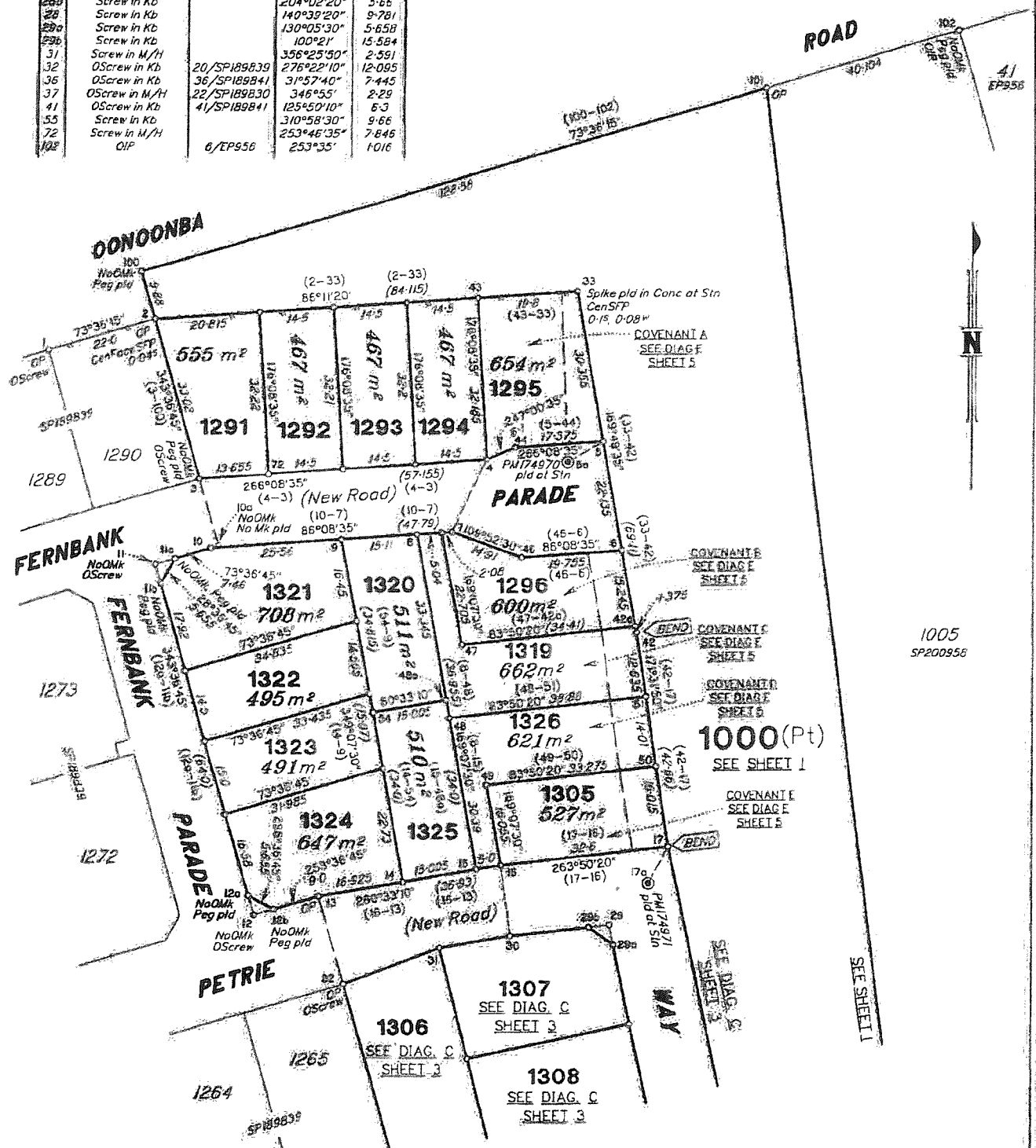
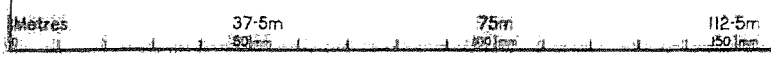


DIAGRAM D  
Scale 1:750

State copyright reserved



Instr Plan Number  
**SP202787**