

Welcome to our new display home...

the Waterbury Lakeview

Please enjoy your visit while previewing the personalised approach to interior design and quality finish you can expect from New Home Solutions. We welcome your feedback on what elements you would customise to make The Waterbury Lakeview just right for your family.



The Waterbury Lakeview layout..

The Waterbury Lakeview was designed to deliver on the needs of a diverse family lifestyle, with multiple options to internal living areas and outdoor entertaining areas alike. With the North Queensland climate in mind, we have a huge need to focus on energy efficiency and personal comfort with consideration to predominant breezes and solar influences... simply being essential to design.

Building with us...

We're big enough to save you serious money... and we're small enough to treat you with the personalised service you deserve... we genuinely care about your building experience... it's our future too.

Free Design Service...

New Home Solutions allows you to create your perfect new home layout with the help of our professional design team.

Your personalised design analysis identifies your wants and needs ... along with the must have design elements for your particular block of land. And if you don't own the land yet ... be sure to use our free design service to research your new home address before you commit to it.

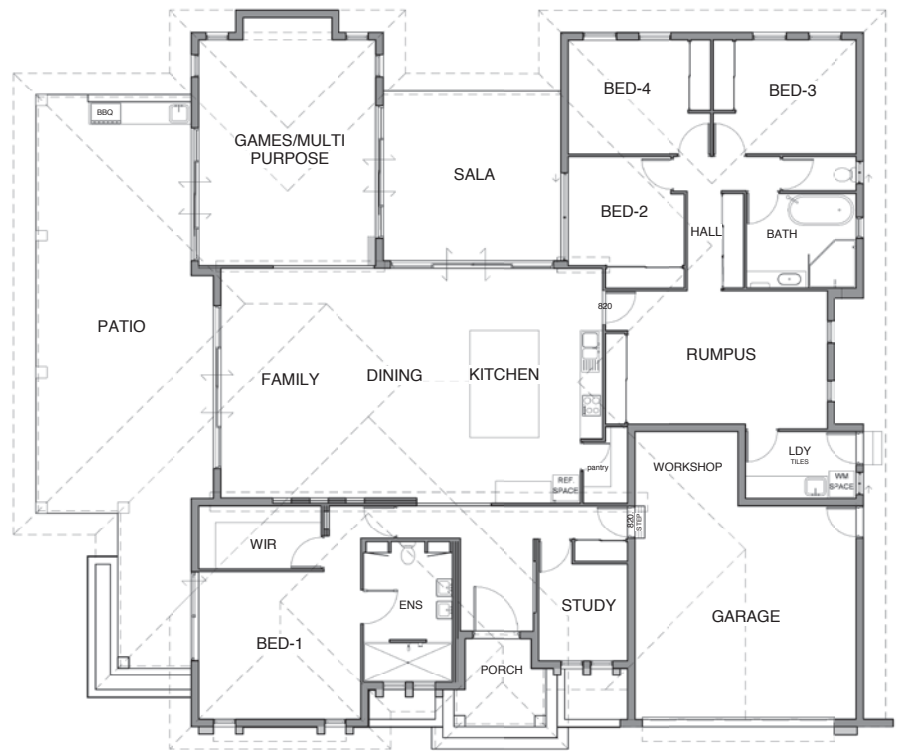
3D Walkthrough...

Take a 3-dimensional tour of your new home before you spend a cent or make any commitments ... a great tool in making the right decision on land and home.

Look for these design features...

- Lake views... designed to achieve the western aspect with adequate shading and screening, providing a lifestyle of comfort and energy efficient living.
- The northern sala provides a secondary outdoor living area for summer and funnels the prevailing summer breeze through the home with a venturi effect.
- Raised ceilings to deliver a feeling of fresh open space.
- 5 separate living areas inside and out... with designated activity rooms for the various family groups.
- Multi-Purpose room for use as either a games room with views and access to both outdoor areas or as a dedicated media room or cinema.
- Generous lake view deck space... watch the ducks land and the barra jump while cooking in the outdoor kitchen.

Waterbury Lakeview Floor Plan



Flexible building solutions...

Whether it's your land or ours... we provide you with absolute flexibility to adopt and adjust plans from our huge database of homes... or our professional design team work with your concepts in design and layout... either way it's all about you!

Your building partner...

Do you need to move to a builder who really knows how to work with real people... and to be on the same team... on "your team"? At New Home Solutions our customers are our future... and we're very aware of this... and what's more we show it every step of the way.

It's all about you ...

Prestige and opulence... combined with innovative concepts and practical lifestyle features, The Waterbury Lakeview is designed specifically to have you question your preferences... so let us know what you would do to make your new home uniquely yours.

How much? That's up to you...

The level of investment for your new home will vary depending on your personal wants and needs and naturally on your chosen level of fit-out and finish. Our professional team of design consultants will help you identify your personal design and inclusion options before you spend a cent or make any commitment. Ask about our fixed price policy... it's all about you!



Ph. 4778 1794
Mob. 0419 399 099
Web. www.nhsq.com.au
21 Waterbury Terrace,
Fairfield Waters



QBSA BUILDER

